



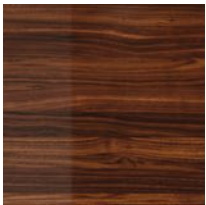
luxury &  
convenience

home elevators by  
 **savaria**

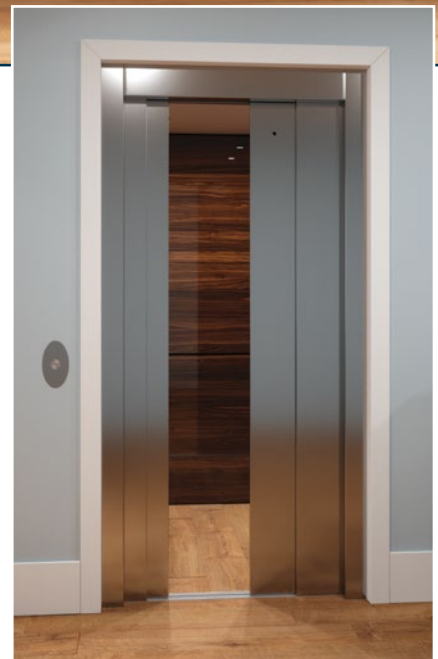
# slim luxury

## Classic at its finest.

Your choice of luxury MDF or stainless steel cab, finished with stainless steel fixtures and automatic slim doors on the cab and landing. Refined elements include a touchpad phone on the cab operating panel (COP), and upgraded cab rollers for an ultra-smooth ride.



Cab features luxury MDF in Walnut with stainless steel fixtures





## Create a lifetime home

Your dream home deserves a dream elevator. Adding luxury and convenience for today also provides easy accessibility for all, making your home barrier-free for years to come.

Whether you are renovating or building new, a Savaria home elevator will enhance your home and its resale value. You demand high quality and excellent value for your investment; when you choose Savaria, you get the best of both worlds. A Savaria elevator is luxurious value, built reliably – just for you.

## Customize your solution

Your home is a reflection of your personal style; your Savaria home elevator can be too. Create the perfect solution tailored to your unique needs and design sense, from a wide selection of model and configuration options, finishes, and accessories.

Or, eliminate the guesswork with pre-selected finishes and features, designed to work beautifully together. Choose from three upgrade packages – slim luxury, ultimate black or glass elegance – created to bring you distinct styling and popular options at significant savings.



## Beauty, brawn & brains

Your Savaria home elevator is built with care using reliable components to provide you with dependable performance, and to meet or exceed the strictest elevator, electrical, mechanical and building safety guidelines.

Behind the beautiful exterior is one of the smartest brains around; the microprocessor driven controller is demonstrably reliable and designed for up to 6 stops.

Choose from three feature-packed models with options to suit virtually any configuration: the Zenith, Infinity or Eclipse.



ultimate  
black

### Make a bold statement.

Blackened stainless steel fixtures and integrated touchpad phone on luxury MDF, with black automatic slim doors on the cab.

### Savaria Zenith finest ride quality; whisper-quiet operation

The Zenith is Savaria's top-of-the-line traditional home elevator. Based on our commercial-grade Orion MRL elevator, the robust Zenith features a unique geared traction counterweight design and high 1,400 lb capacity.<sup>1</sup> Requiring only a small space in a closet<sup>1</sup> for components, the elevator can be installed without a traditional machine room.

### Savaria Infinity smooth-riding traditional hydraulic drive

The Infinity's precision hydraulic drive system is dependable and compatible with the use of LEED-qualified Hydro Safe hydraulic vegetable oil. This design houses drive components in a machine room that can be located where best suited in your home. Available with capacity up to 1,000 lb, or choose the Infinity HD version for 1,400 lb capacity or larger cab size.<sup>2</sup>

### Savaria Eclipse best-seller with machine roomless option

The Eclipse is Savaria's most popular home elevator, and a cost-effective choice. The durable geared chain drive design installs quickly, provides a stable ride and does not require a separate machine room. An environmentally-friendly counterweight system reduces motor effort – and therefore power consumption. An Eclipse HD version is available with a 950 lb capacity and cab up to 48" wide.<sup>2</sup>



Cab features luxury MDF in Pearl Matrix with blackened stainless steel fixtures

<sup>1</sup> consult your dealer for local code restrictions

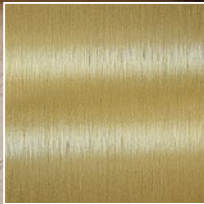
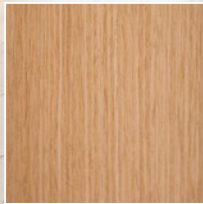
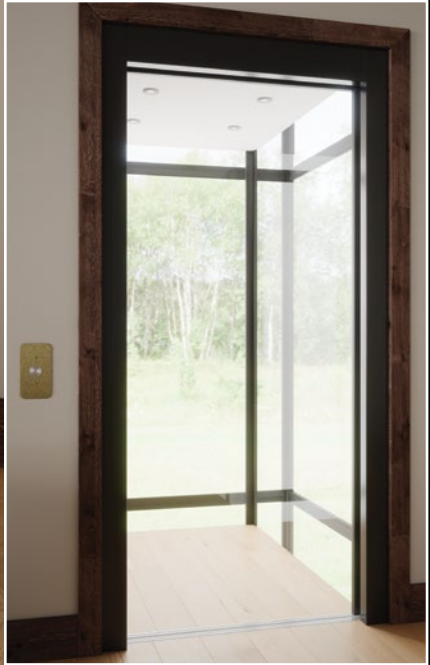
<sup>2</sup> sizes higher than 15 square feet and 950 lb capacity available where code permits

glass  
elegance

**Clearly modern.**

Framed glass automatic slim doors on the cab and landing open into a glass cab with your choice of unfinished veneer or melamine COP wall. Upgraded finishes and a touchpad phone complete the look.





Cab features unfinished oak veneer with brushed brass fixtures

## luxury standards, unlimited options

Create your own personal elevator from our wide selection of options. Choose from a range of cab styles and sizes, then select your finishes to complement and complete your solution. You can even have your own contractor finish your elevator on site.



### Elevator Cab Interiors

Your options include finished hardwood or unfinished veneer cabs in traditional species including oak, cherry and maple. We also offer scratch and fade-resistant luxury MDF panels in a variety of colors and finishes. Our standard elevator includes your choice of melamine or unfinished MDF, and white ceiling with four LED pot lights.

### From automatic sliding doors to traditional gates...



### Automatic Slim Doors

Add convenience and an elegant, modern appearance to your Savaria home elevator with automatic slim doors. These commercial-grade doors can be used as a complete system, or in combination with a swing-style landing door. Finish in stainless steel, powder coated paint, or framed glass.





Cab operating panels (COP) with and without phone



Lights



Handrails



Hall calls

## Fixtures

Stainless Steel upgrade on handrail

Brushed Brass upgrade

Blackened Stainless Steel upgrade

Architectural White powder coat

Bronze anodized aluminum

Clear anodized aluminum

See color chart for more detail

choose from the widest range on the market to finish your home elevator perfectly.



## Bifold Doors

A simple, automatic solution for cab doors. Select from architectural white or stainless steel.

## Accordion Gates

Featuring a sturdy hard hinge to prevent deflection, accordion gates tuck discretely away to leave an unobstructed entry. Choose from a wide selection of panel colors and frame finishes. Add an automatic opener for convenience and ease of use.



# specifications

## Standard specifications

- Capacity: 750 lb, 950 lb, 1,000 lb or 1,400 lb (Zenith or Infinity only, code permitting)
- 2 stops with up to 10' of travel
- Fully automatic operation
- Running speed: 40 ft/min (Zenith, Eclipse) or 36 ft/min (Infinity)
- Illuminated automatic push button operation on hall call stations; in-use indicator lights
- Digital display (floor and directional indicator) in car operating panel (COP)
- Available alpha numeric button marking
- Homing feature
- 80" or 84" cab height
- ¾" melamine or unfinished MDF cab trimmed in black, clear or bronze anodized aluminum
- Surface-mount telephone
- 36 month limited parts warranty

## Safety features

- Certified elevator door locks
- Emergency battery back-up for cab lighting and lowering
- Powered emergency lowering (Zenith); emergency manual lowering with hand crank (Eclipse) or valve (Infinity)
- Audible "beep codes" cue user if action needs to be taken for unit to operate (e.g. close landing door)

## Drive systems

- Zenith: counterweight traction with geared motor 1:1 sheave, three 3/8" diameter elevator traction cables; slack cable safety device
- Eclipse: energy efficient variable speed 2 hp motor drive with motor brake and slack chain brake system
- Infinity: self-contained submersible hydraulic pump and 3 hp motor; various speed valve with soft start/stop

## Optional features

- Running speed up to 50 ft/min (Eclipse and Zenith only), where code permits
- Automatic slim doors available for 84" or 96" cab heights, in 29.5" and 35.5" clear opening configurations
- Bifold doors (Type 1 and 2 cabs only)
- Power gate and power door operators
- Digital display hall calls
- Keypad phone or phone box
- See color chart for details on finishes available

## Additional Eclipse options

- Machine roomless controller in hoistway
- Upgraded roller guides for a smoother ride
- Counter-weight safety brakes (necessary when habitable space is below elevator)

## Configuration options

- Up to 6 stops over 50' of travel\*
- Custom cab height up to 96" (overhead will vary)
- Concurrent landings/openings
- Zenith and Eclipse HD: cab size over 15 square feet (up to 48" wide), and capacity up to 950 lb; cabs with clear width over 42" and automatic slim doors have steel cab with choice of overlay panels
- Infinity HD: cab size up to 54" wide, and capacity up to 1,400 lb

\* Zenith and Eclipse models can be customized to 60' of travel in some jurisdictions, ask your Savaria dealer for details



ECLIPSE Cab size	Type 1		Type 2		Type 3		Type 4		Type 5	
	width	depth	width	depth	width	depth	width	depth	width	depth
36" x 48"	50 ½"	55"	50 ½"	55 ½"	52 ⅝"	55"	52 ⅝"	55"	52 ⅝"	56 ¼"
36" x 54"	50 ½"	61"	50 ½"	61 ½"	52 ⅝"	61"	52 ⅝"	61"	52 ⅝"	62 ¼"
36" x 60"	50 ½"	67"	50 ½"	67 ½"	52 ⅝"	67"	52 ⅝"	67"	52 ⅝"	68 ¼"
40" x 54"	54 ½"	61"	54 ½"	61 ½"	56 ⅝"	61"	56 ⅝"	61"	56 ⅝"	62 ¼"

--	--	--	--	--

Drawings and dimensions for reference only, not to be used for construction.  
Refer to planning guide for Zenith and Infinity measurements.

### Zenith requirements

- Power supply: 240 volt, single-phase, 40 amps, 60 Hz
- Lighting supply: 120 volt, 60 Hz, 15 amps
- Pit depth: 10" minimum
- Overhead: 108" for 80" and 84" cabs; 120" for 96" cab

### Eclipse requirements

- Power supply: 230 volt, single phase, 60 Hz, 30-amp fused disconnect box with 20-amp fuse
- Lighting supply: 120 volt, 60 Hz, 15 amps
- Pit depth: 8" recommended, but as shallow as 6" is possible; 10" required for HD model
- Overhead: 96" for standard 80" cab; 100" for 84" cab; 112" for 96" cab

### Infinity requirements

- Power supply: 208 volt, three-phase, 30 amps, 60 Hz; or 230 volt, single-phase, 30 amps, 60 Hz
- Lighting supply: 120 volt, 60 Hz, 15 amps
- Pit depth: 8" minimum; 12" for HD model
- Overhead: 92" for standard 80" cab; 96" for 84" cab; 108" for 96" cab

Consult planning guide for full construction details and international power requirements

better  
mobility  
for life

**In business for over 30 years,**

Savaria designs, engineers and manufactures products to help people gain personal mobility.

In addition to home elevators, we also offer a complete range of accessibility lifts for residential use and demanding commercial environments.

While competitors have come and gone, Savaria has become an industry leader with a strong – and growing – portfolio of products.

Our large network of authorized Savaria dealers provide expert installation and service.

Call us to locate a dealer near you.



2 Walker Drive Brampton ON L6T 5E1 Canada

tel: 800.661.5112 fax: 905.791.2222

[savaria.com](http://savaria.com)

*"Serving San Diego and Orange Counties  
in Southern California"*

**ADVANTAGE  
ELEVATOR  
INCORPORATED**

License # C11 1027832

(858) 678-8780

[advantageelevator.net](http://advantageelevator.net)



**Authorized Savaria Dealer**